



WHITEPAPER

UNLOCKING THE POWER OF DATA
WITH



AND



Power BI

Introduction

In today's digital age, organisations are inundated with large amounts of data generated from various source systems such as CRM systems, accounting systems and supply chain operations. This data holds the potential to drive strategic decision-making and enhance operational efficiencies. However, the volume and complexity of data can often present significant challenges for organisations striving to extract meaningful insights.

The Challenge of Big Data

Organisations are generating data at an unprecedented rate, resulting in what is often referred to as "big data." This data comes in diverse formats—structured, semi-structured, and unstructured—and from multiple sources, making it inherently complex. The challenge lies not only in storing and managing this data but also in analysing it to derive actionable insights. Traditional data analysis methods often fall short when dealing with the scale and variety of modern datasets.

Key Challenges Include:

1. Data Volume

The sheer amount of data can overwhelm traditional data processing systems, leading to inefficiencies and delays.

2. Data Variety

With data coming from different sources, formats, and structures, integrating and analysing it in a cohesive manner can be a daunting task.

3. Data Velocity

The speed at which new data is generated requires real-time or near-real-time processing capabilities.

4. Data Veracity

Ensuring data accuracy and reliability is crucial for making informed decisions.



MCI's Services: Harnessing Microsoft Power BI

At MCI, we understand the challenges organisations face in managing and analysing their data. Using Microsoft's Power BI, our data analysts are experienced at interpreting vast quantities of data from different sources in a clear and cohesive way and presenting the data in an intuitive and interactive interface that allows users to create visually compelling reports and dashboards.

Features of Power BI Include:

1. User-Friendly Interface

Power BI provides an intuitive and interactive interface that allows users to create visually compelling reports and dashboards.

2. Seamless Integration

Power BI can integrate with a wide range of data sources, including Excel spreadsheets, cloud services, and on-premises databases, ensuring a unified view of your data landscape.

3. Advanced Analytics

With built-in AI capabilities and advanced analytics features, Power BI enables predictive analysis, trend identification, and anomaly detection, empowering organisations to make data-driven decisions.

4. Scalability and Flexibility

Whether you're a small business or a large enterprise, Power BI scales to meet your needs, providing the flexibility to analyse data at any scale.

5. Collaborative Tools

Power BI's collaborative features allow teams to share insights and work together seamlessly, fostering a data-driven culture across the organisation.



Transforming Data into Decisions

By partnering with MCI, organisations can overcome the complexities of big data and unlock its full potential. Our expertise in Microsoft Power BI ensures that your data is not just collected and stored but analysed and visualised in a way that drives business success. We help you turn data into a strategic asset, enabling you to:



Enhance Operational Efficiencies

Identify bottlenecks and optimise processes to improve productivity.



Improve Customer Experience

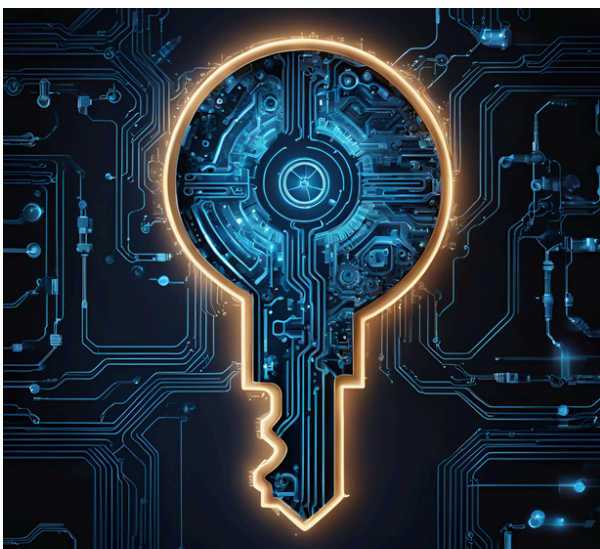
Gain insights into customer behaviour and preferences to tailor services and products.



Drive Innovation

Leverage data to uncover new opportunities and stay ahead of the competition.

Conclusion



Data is one of the most valuable assets an organisation possesses. However, without the right tools and expertise, its potential remains untapped.

Utilising Microsoft's Power BI, MCI can help organisations navigate the complexities of big data, transforming it into a powerful driver of growth and innovation. Embrace the future of data analytics with MCI and unlock the insights hidden within your data.

